

Deccan Cements Limited, Bhavanipuram Lime stone Mine -3, Ravipahad

Palakeedu,Suryapet(Dist). Telangana-508218

MoEF No: J-11015/375/2015-IA.II (M) dated 05.01.2017

DECCAN CEMENTS LIMITED



WORKS : BHAVANIPURAM,
JANPAHAD (Post.), PIN : 508 218
PALAKAVEEDU (Mandal),
SURYAPET Dist. (T.S)
Phones : 08683 - 229503, 229504
08683 - 229505, 229507
Fax : 08683 - 229502
E-mail: dcifactory@yahoo.com
CIN : L26942TG1979PLC002500
Website: www.deccancements.com

DCL:MoEFRO:EC/2024/PQC/ENV/17

10.05.2024

To

The Inspector General of Forests,
Ministry of Environment, Forest & Climate Change,
IRO-Hyderabad,
3rd Floor, Aranya Bhavan,
Opp:RBI,Saifabad ,Hyderabad
Telangana- 500004
iro.hyderabad-moefcc@gov.in

Sub: Submission Status of Compliance for the period "October-2023 to March-2024"

Ref: MoEF No. J-11015/375/2015-IA II (M) Dated 05.01.2017.

Dear Sir,

We are here with enclosing the Status of compliance to Environmental Clearance accorded by Ministry of Environment and Forest Climate Change, vide MoEF No.J-11015/375/2015-IA II(M) dated 05.01.2017 to Deccan Cements Limited, for Bhavanipuram Limestone Mine-3 (183.11 Ha) for enhanced capacity 2.3 MTPA along with enclosures Same shall be uploaded in the Deccan Cements web site.

We will be pleased furnished any other information as desired by you.

Thanking you,

Your's faithfully
For M/s Deccan Cements Limited

Authorized Signatory
cc to : HO ,TSPCB, Hyderabad



REGD. OFFICE : 6-3-666/B, "Deccan Chambers", Somajiguda, Hyderabad - 500 082.
Phone : +91 (40) 23310168, 23310552, 23310561, 23310599 Fax : +91 40 23318366

Deccan Cements Limited, Bhavanipuram Lime stone Mine -3, Ravipahad
Palakeedu,Suryapet(Dist). Telangana-508218
MoEF No: J-11015/375/2015-IA.II (M) dated 05.01.2017

Status of Environmental Clearances received from MOEF vide MoEF No.J-11015/375/2015-IA II (M) dated 05.01.2017 Bhavanipuram Limestone Mine-3(183.11 Ha), as on March'2024.

1. Compliance reports are enclosed herewith for all the conditions stipulated by MoEF.
2. Next report will be sent in December'2024.

A. Special Conditions

| S.No | Conditions | Compliance |
|------|---------------------------------------------------------------------------------------------------------------------------------------------------------------------------------------------------------------------------------------------------------------------------------------------------------------------------------------------------------------------------------------------------------------------------------------------------------------------------------------------------------------------------------------------------------------------------------------------------------------------------------------|------------------------------------------------------------------------------------------------------------------------------------------------------------------------------------------------------------------------------------------------------------------------------|
| 1 | The project proponent may ensure the finalization of surface rights of agriculture land and change of land use certificate from the competent Authority ,before starting mining operations as required under law . | The total mining area is under reserve forest and covered by the conditions of the Forests (Conservation) Act 1980. Forest clearance has been obtained vide MoEF letter Dated 21. Feb 2012. |
| 2 | The project proponent shall obtain Consent to Operate from state pollution control board Telangana State and effectively implement all the Conditions stipulated therein . | Consent for operation is obtained from State Pollution control board Vide Order No. No:220523588038 dated 02.07.2022 |
| 3 | Cumulative impact assessment for air quality shall be carried out and the report shall be submitted along with implementaion plan of the suggested mitigation measures to Regional Office of MoEF with in one year | Report submitted to RO Chennai in July 2018 |
| 4 | The project proponent shall appoint an Occupational Health Specialist for Regular and Periodical medical examination of the workers engaged in the Project and records maintained ; also,Occupational health check-ups for workers having some ailments like BP, diabetes , habitual smokers, etc .shall be undertaken once in six months and necessary remedial /preventive measures taken accordingly . Reccomendations of National Institute for Labour for ensuring good Occupational Environment for mine workers would also be adopted ; All the old age people of the surrounding villages may be provided medical facilities. | Noted and periodical medical checkup of workers have been carried out in the project once in a year. |
| 5 | Transport of minerals shall be done either by dedicated road or it should ensured that the trucks/dumpers carrying the mineral should not be allowed to pass through the villages. The Project Proponent shall ensure that the road may not be damaged due to transportation of the minerals will be as per IRC Guidelines with respective to complying with traffic congestion and desity | Complied as ” No village road encountered in the mining operation or mineral transportation” . |
| 6 | Implementation of Action Plan on the issues raised during the Public Hearing.The Proponent shall complete all the tasks as per the Action Plan submitted with the budgetary provisions during the Public Hearing . | Noted and will be complied as per the action plan. |
| 7 | The pollution due to transportation load on the environment will be effectively controlled & water sprinkling will also be done regularly . Vehicles with PUCC only will be allowed to ply . The mineral transportation shall be carried out through covered trucks only and the vehicles carrying the minerals shall not be | All vehicles deployed in mining operation are having valid permit as per Central Motor Vehicle Rules, 1989 and its amendments and are plying under proper supervision. Care has been taken to avoid over loading of ore during transportation, PUC certificate also provided |

Deccan Cements Limited, Bhavanipuram Lime stone Mine -3, Ravipahad
Palakeedu,Suryapet(Dist). Telangana-508218
MoEF No: J-11015/375/2015-IA.II (M) dated 05.01.2017

| | | |
|---|-------------------------------------------------------------------------------------------------------------------------------------------------------------------------------------------------------------------------------------|------------------------------------------------------------------------------------------|
| | overloaded. Project should obtain PUC certificate for all the vehicles from authorized pollution testing centre. | |
| 8 | The project proponent shall ensure the safeguard and wellbeing of villagers and school, regular health monitoring of all residents in the area and the compliance Reports shall be submitted to the regional Office of the Ministry | Noted and medical checks will be carried out. Compliance reports will be submitted to RO |

B. Standard Conditions

| S. No | Conditions | Compliance |
|-------|------------------------------------------------------------------------------------------------------------------------------------------------------------------------------------------------------------------------------------------------------------------------------------------------------------------------------------------------------------------------------------------------------------------------------------------------------------------------------------------------------------------------------------------------------------------------------------------------------------------------------------------------------------------------------------------------------------------------------------------------------------------------------------------------------|-------------------------------------------------------------------------------------------------------------------------------------------------------------------------------------------------------------------------------------------------------|
| 1. | A Final Mine closure Plan along with details of Corpus Fund shall be submitted to the Ministry of Environment , Forest and Climate Change 5 years in advance of the Final mine closure for approval . | Noted and will be addressed at the appropriate time. |
| 2 | No Change in mining technology and scope of working should be made with out prior approval of the Ministry of Environment, Forest and Climate Change. | Noted and will be followed |
| 3 | No Change in the calender plan including excavation , quantum of mineral and waste should be made | Noted and will be followed |
| 4 | The project proponent shall obtain necessary prior permission of the competent authorities for drawal of requisite quantity of water (Surface water and ground water) for the project. | |
| 5 | Mining shall be carried out as per provisions outlined in mining plan approved by Indian Bureau of Mines (IBM) State Mines & Geology Departmnet as well as by abiding to the guidelines of Director General Mines Safety (DGMS) | Necessary permissions obtained from DGMS, IBM and Mining plan is approved |
| 6 | The lands which are not owned by proponent, mining will be carried out only after obtaining the consents from all the concerned land owners as per the provisions of the Mineral Concession Rules, 1960 and MMDR Act, 1957 | The total mining area is under reserve forest and covered by the conditions of the Forests (Conservation) Act 1980. Forest clearance has been obtained vide MoEF letter Dated 13.9.2013 |
| 7 | Digital processing of the entire lease area using remote sensing technique shall be carried out regularly once in three years for monitoring land use pattem and report submitted to Ministry of Environment , Forest and Climate Change its Regional Office . | Report of Digital processing of the entire lease area using remote sensing technique submitted to the Regional Office, Ministry of Environment , Forest and Climate Change in 2018 and 2021. |
| 8 | The critical parameters as per the Notification 2009 such as PM ₁₀ , PM _{2.5} ,NOx and SOx etc. in the ambient air with in the impact zone , peak particle velocity at 300m distance or within the nearest habitation , whichever is closer shall be monitored periodically. For that, quality of discharged water shall also be monitor [(TDS,DO,PH and Total Suspended Solides (TSS)]. The monitored data shall be uploaded on the web site of the company as well as displayed on adisplay board at the project site at a suitable location near main gate of the company in public domine. The Circular No-J 20012/1/2006-IA-II(M) dated 27.05.2009 issued by Ministry of Environment , Forest and Climate Change shall also be referred in this regard for its compliance . | Critical parameters of ambient air quality are continuously displayed at main gate. “Digital Display at the Main Gate for Continuous Ambient air quality & Continuous Stack emission data is provided” at Factory Main Gate for public domain. |
| 9 | The Proponent shall install online Ambient Air Quality Monitoring System and there should be System for display of digital AAQ data with in 03 months at least three locationa as per the wind directions | Noted and will be complied , The continuous online Ambient Air Quality monitoring systems are installed |

Deccan Cements Limited, Bhavanipuram Lime stone Mine -3, Ravipahad
Palakeedu,Suryapet(Dist). Telangana-508218
MoEF No: J-11015/375/2015-IA.II (M) dated 05.01.2017

| | | |
|----|--------------------------------------------------------------------------------------------------------------------------------------------------------------------------------------------------------------------------------------------------------------------------------------------------------------------------------------------------------------------------------------------------------------------------------------------------------------------------------------------------------------------------------------------------------------------------------------------------------------------------------------------------------------------------------------|----------------------------------------------------------------------------------------------------------------------------------------------------------------------------------------------------------------------------------------------------------------------------------------------------------------------------------------------------------------------------|
| | . Online provisions of P ^H and turbidity meters at discharge points of STP and ETP and also at water storage ponds in the mining area may be made . Project Proponent should display the result digitally in front of the Gate of the mine site . | as per wind directions and Digital Display Board provided at main gate of the factory for all the said locations |
| 10 | Effective safeguard measures such as regular water sprinkling shall be carried out in critical areas prone to air pollution and having high level of PM ₁₀ and PM _{2.5} such as haul roads , loading and unloading points and transfer points . Fugitive dust emmissions from all the source shall be controlled regularly .It shall be ensured that the Ambient Air Quality parameters conform to the norms prescribed by the Central Pollution Control Board in this regard. Monitoring of Ambient Air Quality to be carried out based on the Notification 2009, as amended fromtime to time by the Central Pollution Control Board . | Noted and We have engaged M/s. Lawn Enviro Associates for monitoring of Ambient Air Quality data and we are well within the norms as stipulated by the CPCB. Details enclosed in Annexure-I We have already taken measures to minimize the fugitive dust emissions like sprinkling of water on roads, Wet Drilling is adopted to control the fugitive emissions. |
| 11 | Regular Monitoring of Ground Water levels and quality shall be carried out in and around the mine lease by establishing a net work of existng wells and constructing new pizometers during the mining operation. The project proponent shall ensure that no natural water course and /or water resources shall be obstructed due to any mining operations . The monitoring shall be carried out four times in a year – pre monsoon(April-May), monsoon (August), post –monsoon (November) and winter (January) and the data thus collected shall be regularly sent to MOEF&CC and Regional office , Central Ground Water Authority and Regional Director, Central Ground Water Board | Ground water is not encountered in the mine pit. However every quarter we are monitoring the ground water quality as well as levels at 4 locations in mine lease area. The monitored data is being submitted to MoEF in evrey 6 monthly EC compliance. |
| 12 | Regular Monitoring of the flow rate of the springs and perennial nallahs flowing in and around the mine lease shall be carried out and records maintain. The natural water bodies and or streams which are flowing in an around the village , should not be distrubed. The water Table should be nurtured so as not to go below the pre mining period. In case of any water scarcity in the area , The Project Proponent has to provide water to the villagres for their use . A provision for regular monitoring of water table in open dug wall located in village should be incorporated toascertain the impact of mining over ground water table | No Springs and perennial nallahs encountered or flowing through the mine lease. We are providing water to the nearby villages during the peak summer |
| 13 | Regular monitoring of water quality upstream and down stream of water bodies shall be carried out and record of monitoring data should be maintained and submitted to the Ministry of Environment and Climate Change and its Regional Office , , Central Ground Water Authority and Regional Director, Central Ground Water Board, State Pollution control Board and Central pollution Control Board . | Not applicable |
| 14 | Transport of minerals by road passing through the village shall not be allowed , a ‘bypass’ road should be constructed (Say, leaving a gap of at least 200meters) from the purpose of transportation of the minerals so that the impact of sound , dust and accident could be mitigated. The project proponent shall bear the cost towards the widening and strengthening of existing public road network in case the same is proposed to be used for the project. No road movement should be allowed on existing village road network with out appropriately increasing the carrying capacity of such roads | Not applicable |

Deccan Cements Limited, Bhavanipuram Lime stone Mine -3, Ravipahad
Palakeedu,Suryapet(Dist). Telangana-508218
MoEF No: J-11015/375/2015-IA.II (M) dated 05.01.2017

| | | |
|----|-------------------------------------------------------------------------------------------------------------------------------------------------------------------------------------------------------------------------------------------------------------------------------------------------------------------------------------------------------------------------------------------------------------------------------------------------------------------------------------------------------------------------------------------------------|---------------------------------------------------------------------------------------------------------------------------------------------|
| 15 | The illumination and sound at night at the project sites disturb the villages in respect of both human and animal population . Consequent sleeping disorders and stress may affect the health in the villages located close to mining operations. Habitations have a right for darkness and minimal noise levels at night. PPs must ensure that the biological clock of the villages is not disturbed ; by orienting the floodlights/masks away from the villages and keeping the noise levels well within the prescribed limits for Day /Night hours | Noted. No mining operations are carried out during the night time and we operate only as per the IBM approved plan. |
| 16 | Main haulage road in the mine should be provided with permanent water sprinklers and other roads should be regularly wetted with water tankers fitted with sprinklers . Crusher and material transfer points should invariably be provided with Bag filter and dry fogging system , belt-conveyors should be fully covered to avoid air borne dust; | Complied. We have provided permanent water sprinklers along main haul road. Water Tanker (12 KL Capacity) is used for wetting other roads.. |
| 17 | Main haulage road in the mine should be provided with permanent water sprinklers and other roads should be regularly wetted with water tankers fitted with sprinklers. The material transfer point should invariably be provided with Bag filter and dry fogging system , belt-conveyors should be fully covered to avoid air borne dust; Use of effective sprinkling system to suppress fugitive dust on haul roads and other transport roads shall be ensured. | Complied. We have provided permanent water sprinklers along main haul road. Water Tanker (12 KL Capacity) is used for wetting other roads. |
| 18 | Sufficient number of Gullies to be provided for the better management of water Regular Monitoring of PH shall be included in the monitoring plan and reports shall be submitted to the Ministry of Environment , Forest & climate Change and its Regional Office on Six monthly basis. | Noted and will be complied |
| 19 | There shall be planning , development and implementing facility of rain water harvesting measures on long term basis and implementation of conservation measures to augment of ground water resources in the area in consultation with Central Ground Water Board. | Noted and implemented |
| 20 | The project Proponent has to take care of gullies formed on slopes. Dump mass should be consolidated with proper filling / levelling with help of dozers/Compactors | Not applicable as no dump is maintained as mineral is outcropped |
| 21 | The reclamation at waste dump sites shall be ecologically sustainable . Scientific reclamation shall be followed. The local species may be encouraged and species are so chosen that the slope, bottom of the dumps and the top of dumps are able to sustain these species . The aspect of the dump is also a factor which regulates some climatic parameters and allows only species adapted micro climate . | Not applicable as no waste is generated and no dump is formed. |

Deccan Cements Limited, Bhavanipuram Lime stone Mine -3, Ravipahad
Palakeedu, Suryapet (Dist). Telangana-508218
MoEF No: J-11015/375/2015-IA.II (M) dated 05.01.2017

| | | |
|----|------------------------------------------------------------------------------------------------------------------------------------------------------------------------------------------------------------------------------------------------------------------------------------------------------------------------------------------------------------------------------------------------------------------------------------------------------------------------------------------------------------------------------------------------------------------------------------------------------------------------------------------------------------------------------------------------------------------------------------------------------------------------------------------------------------------------------------------------------------------------------------------------------------------------------------------------------------------------------------------------------------------------------------------------------------------------------------------------------------|----------------------------------------------------------------------------------------------------------------------------------------------------------------------------------------------|
| 22 | <p>The top soil, if any shall temporarily be stored at earmarked sites(s) only and it should not be kept unutilized for long. The top soil shall be used for land reclamation and plantation. The over burden (OB) generated during the mining operations shall be stacked at earmarked dump site(s) only and it should not be kept active for a long period of time. The maximum height of the dumps shall not exceed 8m and width 20m and overall slope of the dumps shall be maintained to 45°. The OB dumps should be scientifically vegetated with suitable native species to prevent erosion and surface run off. In critical areas, use of geo textiles shall be undertaken for stabilization of the dump. The entire excavated area shall be backfilled and afforested. Monitoring and management of rehabilitated areas should continue until the vegetation becomes self-sustaining. Compliance status shall be submitted to the Ministry of environment, forest and climate change and its regional office on six monthly basis.</p> | <p>The lime stone is outcropped. Soil available in small pockets and the same is used for plantation.</p> |
| 23 | <p>Catch drains and siltation ponds of appropriate size shall be constructed around the mine working mineral and OB dumps to prevent run off of water and flow of sediments directly into the river and other water bodies. The water so collected should be utilised for watering the mines area, roads, green belt development etc. The drains shall be regularly desilted particularly after monsoon and maintained properly. The drains settling tanks and check dams of appropriate size, gradient and length shall be constructed both around the mine pit and over burden dumps to prevent run off of water and flow of sediments directly into the river and other water bodies and sump capacity should be designed keeping 50 % safety margin over and above peak sudden rainfall (based on 50 years data) and maximum discharge in the area adjoining the mine site. Sump capacity should also provide adequate retention period to allow proper settling of silt material. Sedimentation pits shall be constructed at the corners of the garland drains and desilted at regular intervals.</p> | <p>Two check Dams constructed.</p> |
| 24 | <p>Plantation shall be raised in a 7.5m wide range green belt in the safety zone around the mining lease, backfilled and reclaimed area, around water body, along the roads etc. by planting the native species in consultation with the local DFO/ Agriculture department and as per CPCB guidelines. The density of the trees should be around 2500 plants per ha. Green belt shall be completed within first five years.</p> | <p>Complied. About 913 saplings planted in an area of 0.3652 Ha between 01.10.2023 to 31.03.2024. Cumulative of around 21,010 saplings planted in an area of 8.42 Ha from the beginning.</p> |
| 25 | <p>Project proponent shall follow the mitigation measures provided in office memorandum No. Z-11013/57/2014-IA-II (M), Dated 29th October, 2014, titled "impact of mining activities on Habitations-Issues related to the mining projects where in habitations and villages are the part of mine lease areas or Habitations and villages are surrounded by the mine lease area".</p> | <p>Noted and complied</p> |
| 26 | <p>The project proponent shall make necessary alternative arrangements, where required, in consultation with the state government to provide alternate areas for live stock grazing, if any. In this context, Project proponent should implement the directions of the Hon'ble Supreme Court with regard to acquiring grazing land. The Sparse trees on such grazing ground, which provide mid</p> | <p>Not applicable as the land comes under reserve forest. And we have handed over the compensatory land to Forest department</p> |

Deccan Cements Limited, Bhavanipuram Lime stone Mine -3, Ravipahad
Palakeedu,Suryapet(Dist). Telangana-508218
MoEF No: J-11015/375/2015-IA.II (M) dated 05.01.2017

| | | |
|----|----------------------------------------------------------------------------------------------------------------------------------------------------------------------------------------------------------------------------------------------------------------------------------------------------------------------------------------------------------------------------------------------------------------------------------------------------------|------------------------------------------------------------------------------------------------|
| | day shelter from the scorching sun, should be scrupulously guarded against felling and plantation of such trees be promoted. | |
| 27 | The project proponent shall take all precautionary measures during mining operation for conservation and protection of endangered fauna, if any, spotted in the study area. Action plan for conservation of flora and fauna shall be prepared and implemented in consultation with the State forest and Wildlife Department. A copy of action plan shall be submitted to the ministry of Environment, forest and climatic change and its Regional Office | Noted and protective measures as suggested by the Telangana Forest Department are implemented. |
| 28 | At least 2.5% of the total cost of the project shall be earmarked towards the enterprise social commitment (ESC) based on local needs and action plan with financial and physical breakup / details shall be prepared and submitted to the ministry's regional office at Chandigarh. Implementation of such program shall be ensured accordingly in a time bound manner. | Noted and complied |
| 29 | Provision shall be made for the housing of construction labour within the site with all necessary infrastructure and facilities such as fuel for cooking, mobile toilets , mobile STP, safe drinking water, medical health care, creche etc. The housing may be in the form of temporary structures to be removed after the completion of the project. | N A |
| 30 | Measures should be taken for control of noise levels below 85 dba in the work environment. Workers engaged in operations of HEMM, etc should be provided with ear plugs / Muffs. | Noted & Complied |
| 31 | Industrial waste water (Workshop and waste water from the mine) should be properly collected treated so as to conform to the standards prescribed under GSR 422 (E) dated 19 th May, 1993 and 31 st December, 1993 or as amended from time to time. Oil and grease trap should be installed before discharge of workshop effluents. | Complied |
| 32 | Personnel working in dusty areas should wear protective respiratory devices and they should also be provided with adequate training and information on safety and health aspects. | Complied |
| 33 | A separate environmental management cell with suitable qualified personnel should be set-up under the control of a Senior Executive, who will report directly to the Head of the organization. | Complied Annexure-A |
| 34 | The funds earmarked for environment protection measures should be kept in separate account and should not be diverted for other purpose. Year wise expenditure should be reported to the ministry and its Regional Office. | Noted, will be Complied |
| 35 | The project authorities should inform to the Regional Office regarding date of financial closures and final approval of the project by the concerned authorities and the date of start of land development work. | Complied |
| 36 | The project proponent shall submit six monthly reports on the status of the implementation of the stipulated environmental safeguards to the ministry of Environment, Forest and Climate Change, its Regional Office, Central Pollution Control Board and State Pollution Control Board. | Noted and will be implemented |
| 37 | The Regional Office of this Ministry shall monitor compliance of the stipulated conditions. The project authorities should extend full | Noted and accepted |

Deccan Cements Limited, Bhavanipuram Lime stone Mine -3, Ravipahad

Palakeedu,Suryapet(Dist). Telangana-508218

MoEF No: J-11015/375/2015-IA.II (M) dated 05.01.2017

| | | |
|----|------------------------------------------------------------------------------------------------------------------------------------------------------------------------------------------------------------------------------------------------------------------------------------------------------------------------------------------------------------------------------------------------------------------------------------------------------------------------------------------------------------------------------------------------------------------------------------------------------------------|--------------------------------------------------------------|
| | cooperation to the Officer (S) of the Regional Office by furnishing the requisite data / information / monitoring reports. | |
| 38 | A copy of clearance letter will be marked to concerned panchyat / Local NGO, if any from whom suggestion / representation has been received while processing the Proposal. | Complied |
| 39 | State Pollution Control Board should display a copy of the clearance letter at the Regional office, District industry centre and collector's office/ Tehsildar's Officer for 30 days. | Complied |
| 40 | The project authorities should advertise at least in two local newspapers widely circulated, one of which shall be in the vernacular language of the locality concerned, within 7 days of the clearance letter informing that the project has been accorded environmental clearance and a copy of the clearance letter is available eith the State Pollution Control Board and also at website of the Ministry of environment, Forest and climate change at www.environmentclearance.nic.in and copy of the Sme should be forwarded to the Regional Office. | Complied "copies" of the news paper is already submitted" |

Thanking you,

Your's faithfully

For M/s Deccan Cements Limited



Authorized Signatory

cc to : HO ,TSPCB, Hyderabad



PRINT SYSTEM GENERATED

Deccan Cements Limited, Bhavanipuram Lime stone Mine -3, Ravipahad
Palakeedu,Suryapet(Dist). Telangana-508218
MoEF No: J-11015/375/2015-IA.II (M) dated 05.01.2017

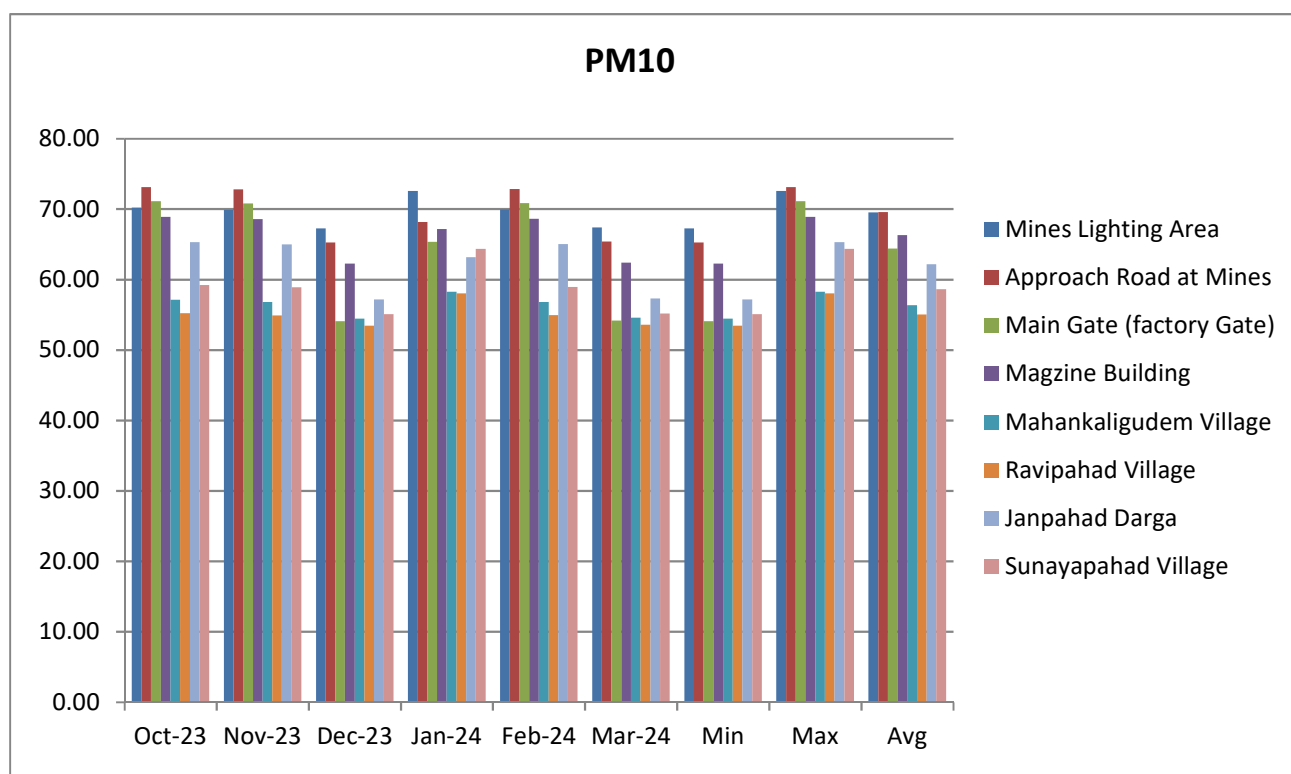
Annexure -A

Environment Management Cell as on 01.03.2024

| S. No. | Name | Designation | Role EMC |
|---------------|-----------------------|---------------------|-----------------|
| 01 | N.Srinivasa Raju | VP (Works) | Chairman |
| 02 | D.Kalyanachakravarthy | GM (Mines) | Coordinator |
| 03 | KVL Narasimharao | DGM (P&Qc) | Organizer |
| 04 | V.Gopalakrishna | Chief Manager (CPP) | Member |
| 05 | M.Satish | Sr,Manager (PQC) | Member |
| 06 | A Rambabu | Asst.Manager | Member |

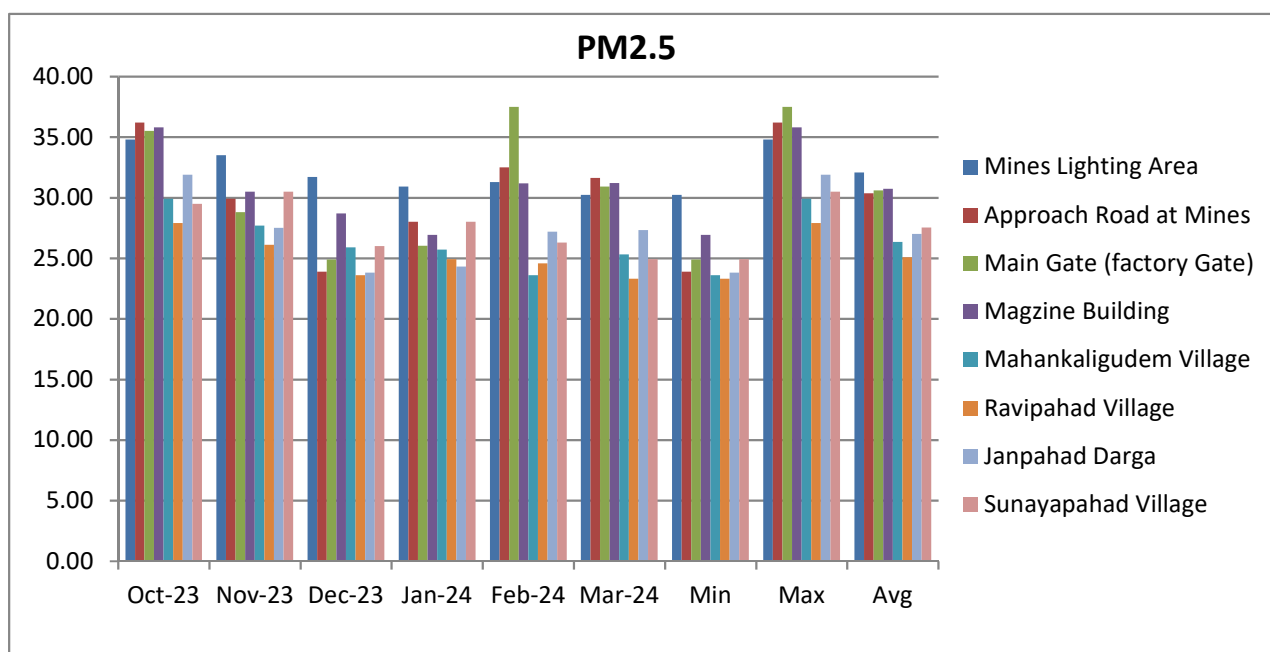
ANNEXURE – I (AMBIENT AIR QUALITY DATA)

| PM10 ($\mu\text{g}/\text{M}^3$) from October'2023 to March'2024 | | | | | | | | | | |
|-------------------------------------------------------------------|--------------------------|--------|--------|--------|--------|--------|--------|-------|-------|-------|
| S No | Location | Oct-23 | Nov-23 | Dec-23 | Jan-24 | Feb-24 | Mar-24 | Min | Max | Avg |
| 1 | Mines Lighting Area | 70.20 | 69.88 | 67.26 | 72.55 | 69.92 | 67.38 | 67.26 | 72.55 | 69.53 |
| 2 | Approach Road at Mines | 73.10 | 72.78 | 65.26 | 68.15 | 72.82 | 65.38 | 65.26 | 73.10 | 69.58 |
| 3 | Main Gate (factory Gate) | 71.10 | 70.78 | 54.06 | 65.35 | 70.82 | 54.18 | 54.06 | 71.10 | 64.38 |
| 4 | Magzine Building | 68.90 | 68.58 | 62.26 | 67.15 | 68.62 | 62.38 | 62.26 | 68.90 | 66.32 |
| 5 | Mahankaligudem Village | 57.10 | 56.78 | 54.46 | 58.25 | 56.82 | 54.58 | 54.46 | 58.25 | 56.33 |
| 6 | Ravipahad Village | 55.20 | 54.88 | 53.46 | 58.05 | 54.92 | 53.58 | 53.46 | 58.05 | 55.02 |
| 7 | Janpahad Darga | 65.30 | 64.98 | 57.16 | 63.15 | 65.02 | 57.28 | 57.16 | 65.30 | 62.15 |
| 8 | Sunayapahad Village | 59.20 | 58.88 | 55.06 | 64.35 | 58.92 | 55.18 | 55.06 | 64.35 | 58.60 |



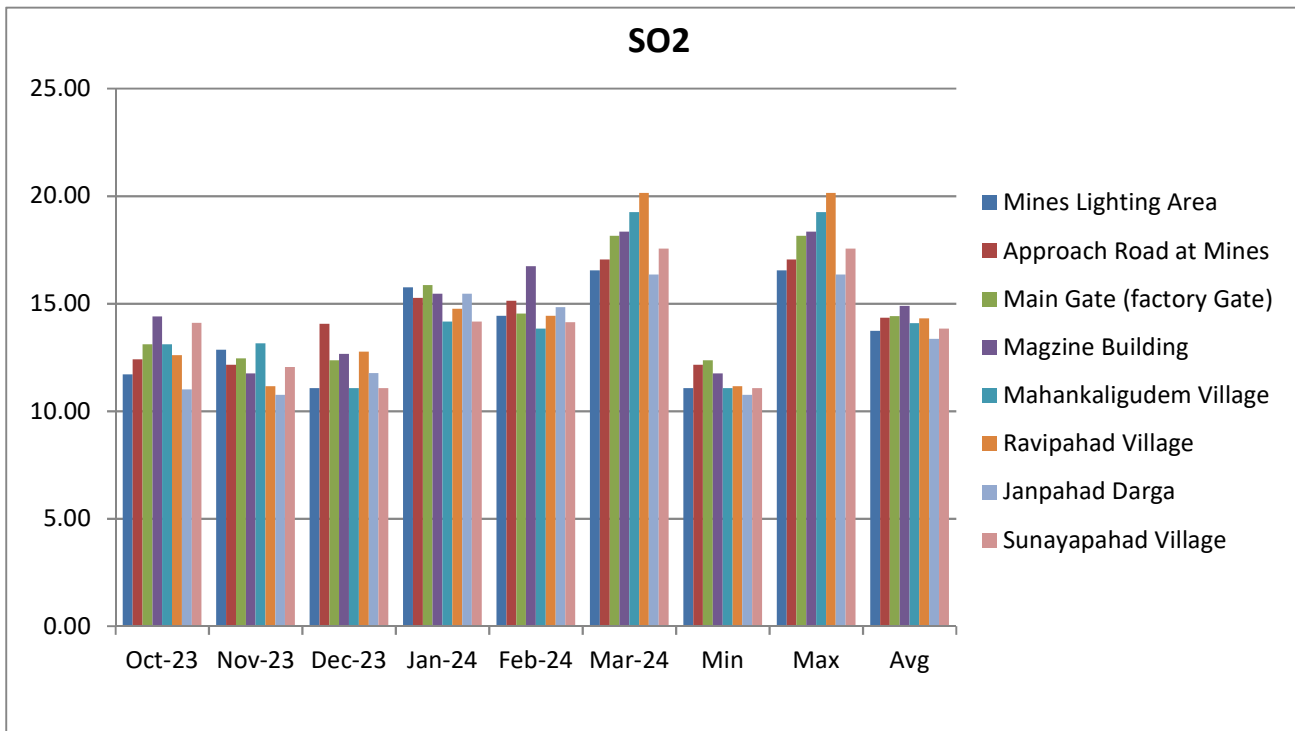
Deccan Cements Limited, Bhavanipuram Lime stone Mine -3, Ravipahad
 Palakeedu,Suryapet(Dist). Telangana-508218
 MoEF No: J-11015/375/2015-IA.II (M) dated 05.01.2017

| PM 2.5 ($\mu\text{g}/\text{M}^3$) from October'2023 to March'2024 | | | | | | | | | | |
|---------------------------------------------------------------------|--------------------------|--------|--------|--------|--------|--------|--------|-------|-------|-------|
| S No | Location | Oct-23 | Nov-23 | Dec-23 | Jan-24 | Feb-24 | Mar-24 | Min | Max | Avg |
| 1 | Mines Lighting Area | 34.80 | 33.50 | 31.70 | 30.92 | 31.29 | 30.22 | 30.22 | 34.80 | 32.07 |
| 2 | Approach Road at Mines | 36.20 | 29.90 | 23.90 | 28.02 | 32.49 | 31.62 | 23.90 | 36.20 | 30.36 |
| 3 | Main Gate (factory Gate) | 35.50 | 28.80 | 24.90 | 26.02 | 37.49 | 30.92 | 24.90 | 37.49 | 30.61 |
| 4 | Magzine Building | 35.80 | 30.50 | 28.70 | 26.92 | 31.19 | 31.22 | 26.92 | 35.80 | 30.72 |
| 5 | Mahankaligudem Village | 29.90 | 27.70 | 25.90 | 25.72 | 23.59 | 25.32 | 23.59 | 29.90 | 26.36 |
| 6 | Ravipahad Village | 27.90 | 26.10 | 23.60 | 24.92 | 24.59 | 23.32 | 23.32 | 27.90 | 25.07 |
| 7 | Janpahad Darga | 31.90 | 27.50 | 23.80 | 24.32 | 27.19 | 27.32 | 23.80 | 31.90 | 27.01 |
| 8 | Sunayapahad Village | 29.50 | 30.50 | 26.00 | 28.02 | 26.29 | 24.92 | 24.92 | 30.50 | 27.54 |



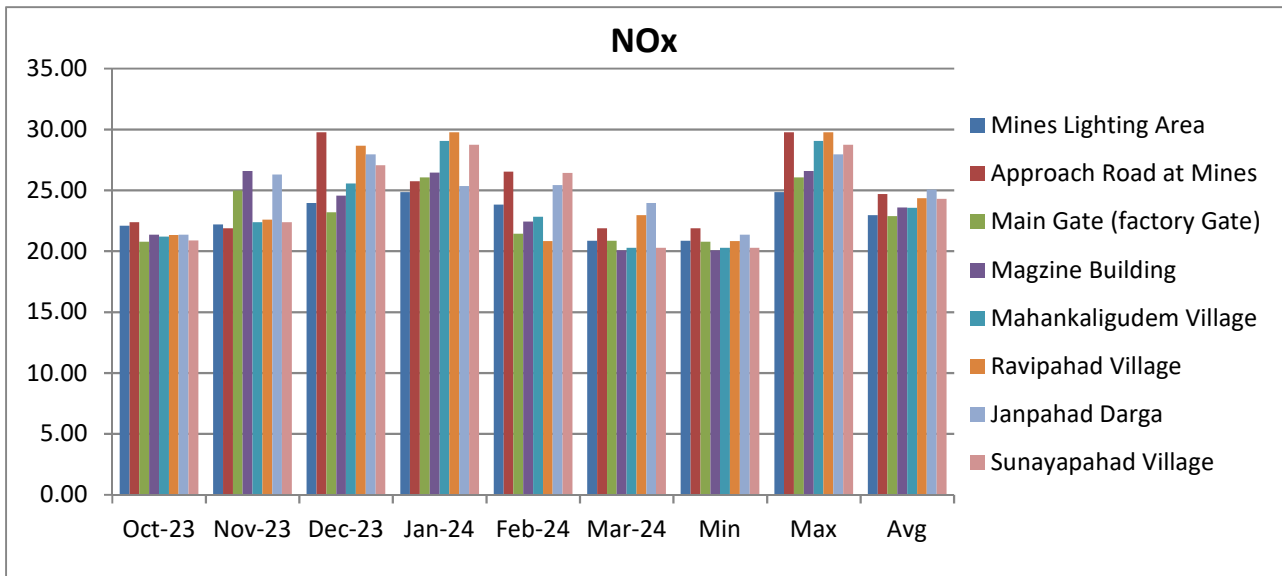
Deccan Cements Limited, Bhavanipuram Lime stone Mine -3, Ravipahad
 Palakeedu,Suryapet(Dist). Telangana-508218
 MoEF No: J-11015/375/2015-IA.II (M) dated 05.01.2017

| SO₂ (µg/ M³) from October'2023 to March'2024 | | | | | | | | | | |
|---------------------------------------------------------------------------|--------------------------|--------|--------|--------|--------|--------|--------|-------|-------|-------|
| S No | Location | Oct-23 | Nov-23 | Dec-23 | Jan-24 | Feb-24 | Mar-24 | Min | Max | Avg |
| 1 | Mines Lighting Area | 11.70 | 12.85 | 11.06 | 15.76 | 14.43 | 16.55 | 11.06 | 16.55 | 13.73 |
| 2 | Approach Road at Mines | 12.40 | 12.15 | 14.06 | 15.26 | 15.13 | 17.05 | 12.15 | 17.05 | 14.34 |
| 3 | Main Gate (factory Gate) | 13.10 | 12.45 | 12.36 | 15.86 | 14.53 | 18.15 | 12.36 | 18.15 | 14.41 |
| 4 | Magzine Building | 14.40 | 11.75 | 12.66 | 15.46 | 16.73 | 18.35 | 11.75 | 18.35 | 14.89 |
| 5 | Mahankaligudem Village | 13.10 | 13.15 | 11.06 | 14.16 | 13.83 | 19.25 | 11.06 | 19.25 | 14.09 |
| 6 | Ravipahad Village | 12.60 | 11.15 | 12.76 | 14.76 | 14.43 | 20.15 | 11.15 | 20.15 | 14.31 |
| 7 | Janpahad Darga | 11.00 | 10.75 | 11.76 | 15.46 | 14.83 | 16.35 | 10.75 | 16.35 | 13.36 |
| 8 | Sunayapahad Village | 14.10 | 12.05 | 11.06 | 14.16 | 14.13 | 17.55 | 11.06 | 17.55 | 13.84 |



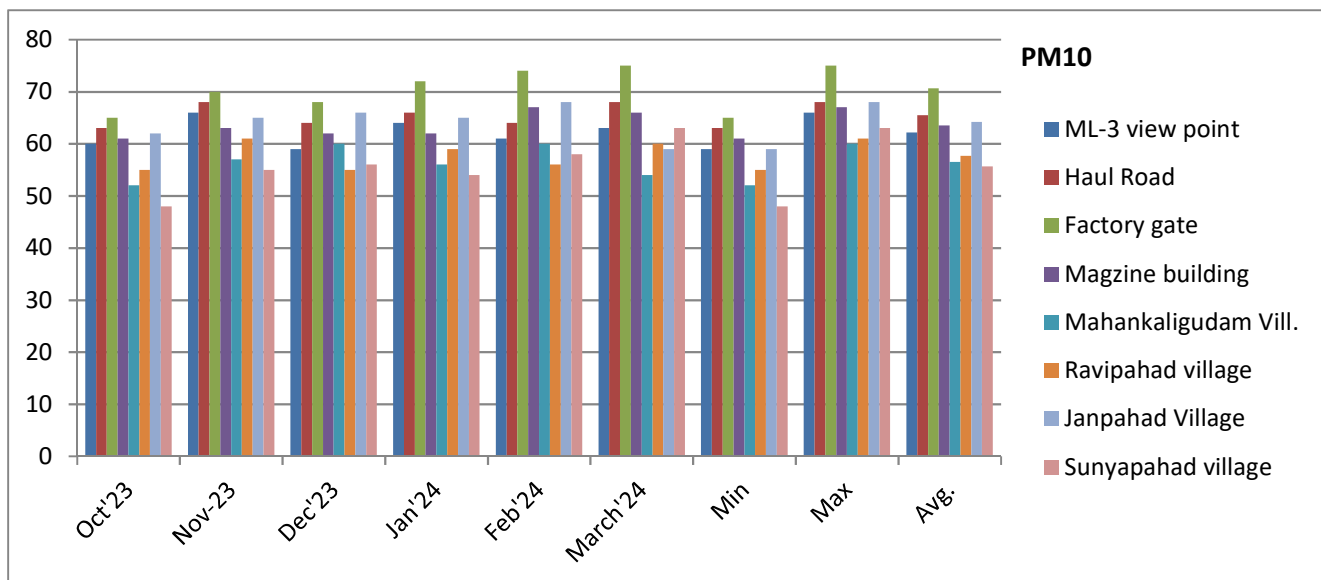
Deccan Cements Limited, Bhavanipuram Lime stone Mine -3, Ravipahad
 Palakeedu,Suryapet(Dist). Telangana-508218
 MoEF No: J-11015/375/2015-IA.II (M) dated 05.01.2017

| NOx ($\mu\text{g}/\text{M}^3$) from October'2023 to March'2024 | | | | | | | | | | |
|----------------------------------------------------------------------------------|--------------------------|--------|--------|--------|--------|--------|--------|-------|-------|-------|
| S No | Location | Oct-23 | Nov-23 | Dec-23 | Jan-24 | Feb-24 | Mar-24 | Min | Max | Avg |
| 1 | Mines Lighting Area | 22.08 | 22.18 | 23.95 | 24.84 | 23.82 | 20.86 | 20.86 | 24.84 | 22.96 |
| 2 | Approach Road at Mines | 22.38 | 21.88 | 29.75 | 25.74 | 26.52 | 21.86 | 21.86 | 29.75 | 24.69 |
| 3 | Main Gate (factory Gate) | 20.78 | 24.98 | 23.19 | 26.04 | 21.42 | 20.86 | 20.78 | 26.04 | 22.88 |
| 4 | Magzine Building | 21.36 | 26.58 | 24.55 | 26.44 | 22.42 | 20.06 | 20.06 | 26.58 | 23.57 |
| 5 | Mahankaligudem Village | 21.20 | 22.38 | 25.55 | 29.04 | 22.82 | 20.26 | 20.26 | 29.04 | 23.54 |
| 6 | Ravipahad Village | 21.33 | 22.58 | 28.65 | 29.74 | 20.82 | 22.96 | 20.82 | 29.74 | 24.35 |
| 7 | Janpahad Darga | 21.36 | 26.28 | 27.95 | 25.34 | 25.42 | 23.96 | 21.36 | 27.95 | 25.05 |
| 8 | Sunayapahad Village | 20.88 | 22.38 | 27.05 | 28.74 | 26.42 | 20.26 | 20.26 | 28.74 | 24.29 |



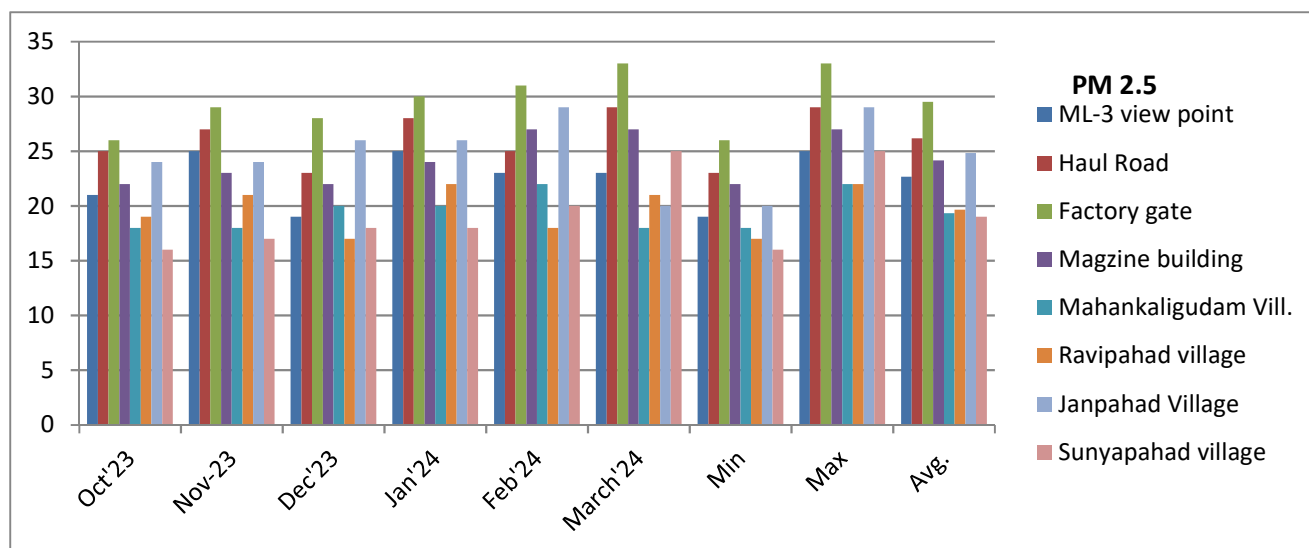
(Third Party Monitoring Reports)

| PM 10 | | | | | | | | | | |
|-------|----------------------|--------|--------|--------|--------|--------|----------|-----|-----|------|
| S No | Location | Oct'23 | Nov-23 | Dec'23 | Jan'24 | Feb'24 | March'24 | Min | Max | Avg. |
| 1 | ML-3 view point | 60 | 66 | 59 | 64 | 61 | 63 | 59 | 66 | 62.2 |
| 2 | Haul Road | 63 | 68 | 64 | 66 | 64 | 68 | 63 | 68 | 65.5 |
| 3 | Factory gate | 65 | 70 | 68 | 72 | 74 | 75 | 65 | 75 | 70.7 |
| 4 | Magzine building | 61 | 63 | 62 | 62 | 67 | 66 | 61 | 67 | 63.5 |
| 5 | Mahankaligudam Vill. | 52 | 57 | 60 | 56 | 60 | 54 | 52 | 60 | 56.5 |
| 6 | Ravipahad village | 55 | 61 | 55 | 59 | 56 | 60 | 55 | 61 | 57.7 |
| 7 | Janpahad Village | 62 | 65 | 66 | 65 | 68 | 59 | 59 | 68 | 64.2 |
| 8 | Sunypahad village | 48 | 55 | 56 | 54 | 58 | 63 | 48 | 63 | 55.7 |



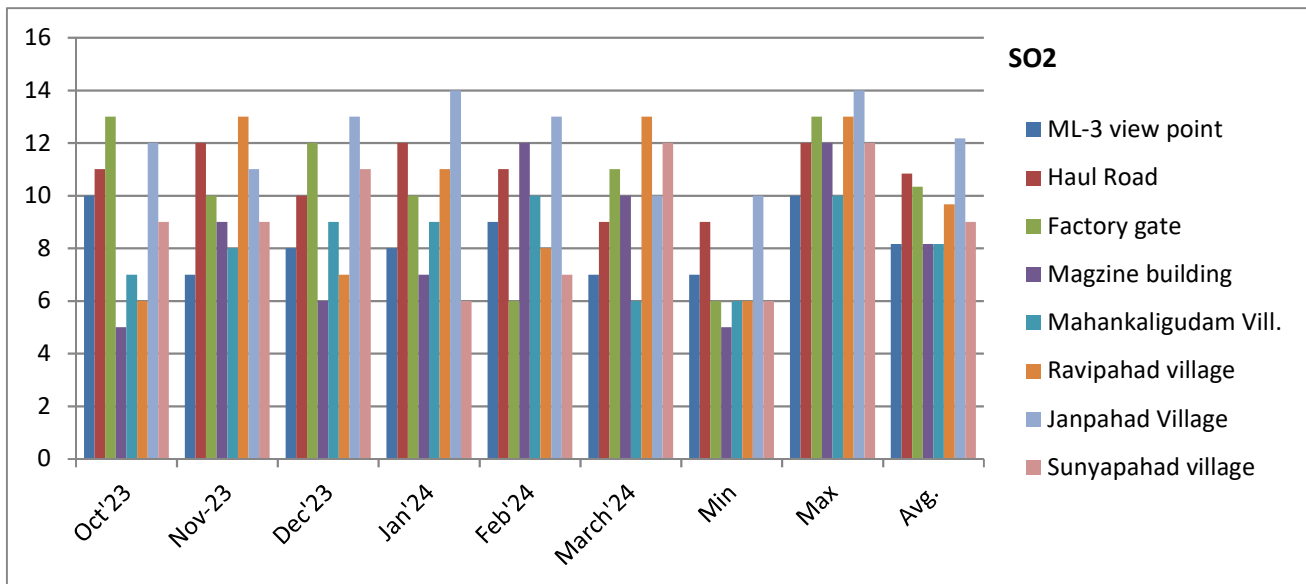
Deccan Cements Limited, Bhavanipuram Lime stone Mine -3, Ravipahad
Palakeedu,Suryapet(Dist). Telangana-508218
MoEF No: J-11015/375/2015-IA.II (M) dated 05.01.2017

| PM 2.5 | | | | | | | | | | |
|--------|----------------------|--------|--------|--------|--------|--------|----------|-----|-----|------|
| S No | Location | Oct'23 | Nov-23 | Dec'23 | Jan'24 | Feb'24 | March'24 | Min | Max | Avg. |
| 1 | ML-3 view point | 21 | 25 | 19 | 25 | 23 | 23 | 19 | 25 | 22.7 |
| 2 | Haul Road | 25 | 27 | 23 | 28 | 25 | 29 | 23 | 29 | 26.2 |
| 3 | Factory gate | 26 | 29 | 28 | 30 | 31 | 33 | 26 | 33 | 29.5 |
| 4 | Magzine building | 22 | 23 | 22 | 24 | 27 | 27 | 22 | 27 | 24.2 |
| 5 | Mahankaligudam Vill. | 18 | 18 | 20 | 20 | 22 | 18 | 18 | 22 | 19.3 |
| 6 | Ravipahad village | 19 | 21 | 17 | 22 | 18 | 21 | 17 | 22 | 19.7 |
| 7 | Janpahad Village | 24 | 24 | 26 | 26 | 29 | 20 | 20 | 29 | 24.8 |
| 8 | Sunypahad village | 16 | 17 | 18 | 18 | 20 | 25 | 16 | 25 | 19.0 |



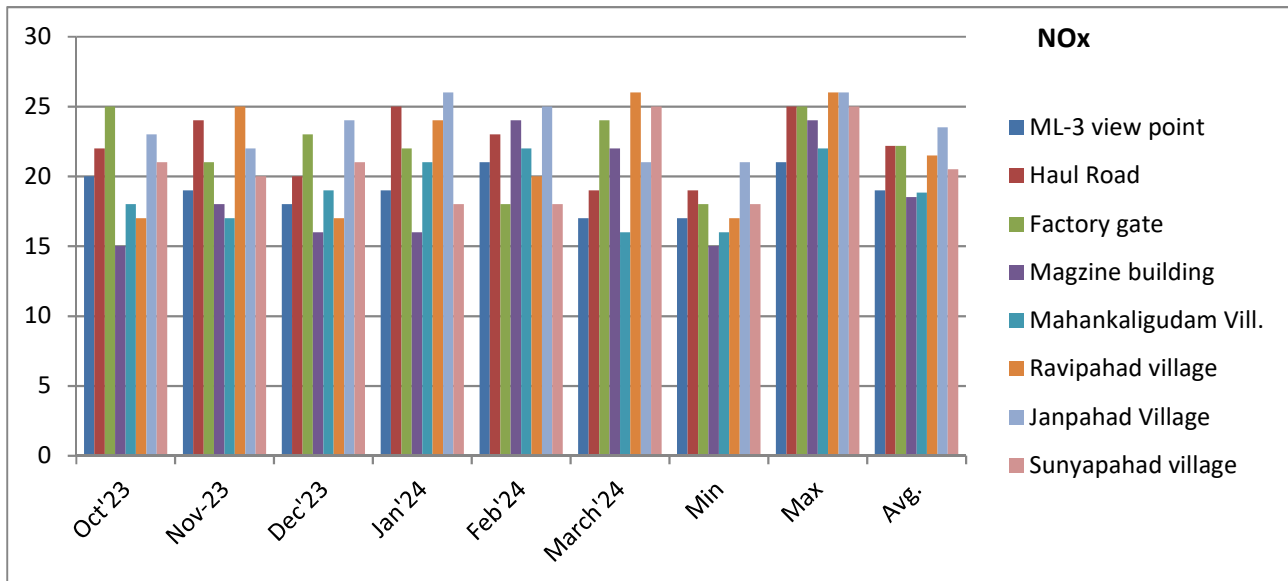
Deccan Cements Limited, Bhavanipuram Lime stone Mine -3, Ravipahad
 Palakeedu,Suryapet(Dist). Telangana-508218
 MoEF No: J-11015/375/2015-IA.II (M) dated 05.01.2017

| SO2 | | | | | | | | | | |
|------|----------------------|--------|--------|--------|--------|--------|----------|-----|-----|------|
| S No | Location | Oct'23 | Nov-23 | Dec'23 | Jan'24 | Feb'24 | March'24 | Min | Max | Avg. |
| 1 | ML-3 view point | 10 | 7 | 8 | 8 | 9 | 7 | 7 | 10 | 8.2 |
| 2 | Haul Road | 11 | 12 | 10 | 12 | 11 | 9 | 9 | 12 | 10.8 |
| 3 | Factory gate | 13 | 10 | 12 | 10 | 6 | 11 | 6 | 13 | 10.3 |
| 4 | Magzine building | 5 | 9 | 6 | 7 | 12 | 10 | 5 | 12 | 8.2 |
| 5 | Mahankaligudam Vill. | 7 | 8 | 9 | 9 | 10 | 6 | 6 | 10 | 8.2 |
| 6 | Ravipahad village | 6 | 13 | 7 | 11 | 8 | 13 | 6 | 13 | 9.7 |
| 7 | Janpahad Village | 12 | 11 | 13 | 14 | 13 | 10 | 10 | 14 | 12.2 |
| 8 | Sunyapahad village | 9 | 9 | 11 | 6 | 7 | 12 | 6 | 12 | 9.0 |



Deccan Cements Limited, Bhavanipuram Lime stone Mine -3, Ravipahad
 Palakeedu,Suryapet(Dist). Telangana-508218
 MoEF No: J-11015/375/2015-IA.II (M) dated 05.01.2017

| Nox | | | | | | | | | | |
|------|----------------------|--------|--------|--------|--------|--------|----------|-----|-----|------|
| S No | Location | Oct'23 | Nov-23 | Dec'23 | Jan'24 | Feb'24 | March'24 | Min | Max | Avg. |
| 1 | ML-3 view point | 20 | 19 | 18 | 19 | 21 | 17 | 17 | 21 | 19.0 |
| 2 | Haul Road | 22 | 24 | 20 | 25 | 23 | 19 | 19 | 25 | 22.2 |
| 3 | Factory gate | 25 | 21 | 23 | 22 | 18 | 24 | 18 | 25 | 22.2 |
| 4 | Magzine building | 15 | 18 | 16 | 16 | 24 | 22 | 15 | 24 | 18.5 |
| 5 | Mahankaligudam Vill. | 18 | 17 | 19 | 21 | 22 | 16 | 16 | 22 | 18.8 |
| 6 | Ravipahad village | 17 | 25 | 17 | 24 | 20 | 26 | 17 | 26 | 21.5 |
| 7 | Janpahad Village | 23 | 22 | 24 | 26 | 25 | 21 | 21 | 26 | 23.5 |
| 8 | Sunyapahad village | 21 | 20 | 21 | 18 | 18 | 25 | 18 | 25 | 20.5 |



Deccan Cements Limited, Bhavanipuram Lime stone Mine -3, Ravipahad

Palakeedu, Suryapet (Dist). Telangana-508218

MoEF No: J-11015/375/2015-IA.II (M) dated 05.01.2017



ISO 9001, 14001 & 45001
CERTIFIED COMPANY

LAWN ENVIRO ASSOCIATES

[Engineers & Consultants in Pollution Control]

Recognised by Ministry of Environment Forest & Climate Change (MoEF & CC), GOI, New Delhi
& Laboratory Accredited by NABL

TEST REPORT

REF.NO: LAWN/DECCAN-M/2024

Date: 22-3-2024

AMBIENT AIR QUALITY DATA

MONTH: March - 2024

Name of the Industry & : **M/s. DECCAN CEMENTS LTD.,**
Address **BHAVANIPURAM LIMESTONE MINE-3,**
Ravipahad (V), Palakeedu (M),
Suryapet (Dist).

| Sl.No | Date of Sample | Time duration | Location | Avg. Flow rate (m ³ /min) | PM ₁₀ | PM _{2.5} | SO ₂ (µg/m ³) | NO _x (µg/m ³) | CO (µg/m ³) |
|--------------------------|----------------|---------------|---------------------------|--------------------------------------|---------------------------------------------|---------------------------------------------|--------------------------------------------------|--------------------------------------------------|---------------------------------|
| 1. | 15-3-2024 | 24hrs | 1. ML-3 View point | 1.14 | 63 | 23 | 07 | 17 | < 1 |
| | | | 2. Haul road | 1.07 | 68 | 29 | 09 | 19 | < 1 |
| | | | 3. Factory gate | 1.09 | 75 | 33 | 11 | 24 | < 1 |
| | | | 4. Magazine building | 1.06 | 66 | 27 | 10 | 22 | < 1 |
| 2. | 16-3-2024 | 24hrs | 1. Mahankaligudem Village | 1.10 | 54 | 18 | 06 | 16 | < 1 |
| | | | 2. Ravipahad Village | 1.05 | 60 | 21 | 13 | 26 | < 1 |
| | | | 3. Janpahad Durga | 1.04 | 59 | 20 | 10 | 21 | < 1 |
| | | | 4. Sunya Pahad Village | 1.12 | 63 | 25 | 12 | 25 | < 1 |
| LIMIT | | | | --- | <100 | <60 | <80 | <80 | <2000 |
| PROTOCOL / METHOD | | | | | IS:5182 (Part-23); 2017/ Gravimetric Method | IS:5182 (Part-24); 2019/ Gravimetric Method | IS:5182 (Part-2); 2018/ New West & Greake Method | IS:5182 (Part-6); 2017/Jacob & Hochheiser Method | IS:5182 (Part-10); 2019/ Method |

1. RESPIRABLE DUST SAMPLER / APM 460 BL (SL.NO. 2461-DTA-2019), CALIBRATED ON 30-12-2023, DUE ON 29-12-2024
2. RESPIRABLE DUST SAMPLER / APM 460 BL (SL.NO. 2161-DTH-2011), CALIBRATED ON 30-12-2023, DUE ON 29-12-2024
3. RESPIRABLE DUST SAMPLER / APM 460 BL (SL.NO. 2464-DTA-2019), CALIBRATED ON 30-12-2023, DUE ON 29-12-2024
4. RESPIRABLE DUST SAMPLER / APM 460 BL (SL.NO. 2465-DTA-2019), CALIBRATED ON 30-12-2023, DUE ON 29-12-2024

1. FINE PARTICULATE SAMPLER / AAS 127 MINI; (SL.NO. 16-I-623), CALIBRATED ON 30-12-2023, DUE ON 29-12-2024
2. FINE PARTICULATE SAMPLER / AAS 127 MINI; (SL.NO. 17-F-731), CALIBRATED ON 30-12-2023, DUE ON 29-12-2024
3. FINE PARTICULATE SAMPLER / AAS 127 MINI; (SL.NO. 17-J-750), CALIBRATED ON 30-12-2023, DUE ON 29-12-2024
4. FINE PARTICULATE SAMPLER / AAS 127 MINI; (SL.NO. 17-J-751), CALIBRATED ON 30-12-2023, DUE ON 29-12-2024

AUTHORISED SIGNATORY

Head Office : "LAWN HOUSE", #184-C, Vengalrao Nagar, Hyderabad - 500 038. (T.S.) INDIA. Tel : 040-66730925, 66730926, Fax : 040-66730926

Branch Office : D.No.31-58-103, MIG-71, Phase-7, Road No.4/4, Dwarakapuri Colony, Kurmanapallem, Vishakhapatnam-530046.Tel : 9701505182

E-mail : lawnenviro@yahoo.co.in, Website : www.lawnenviro.com

Deccan Cements Limited, Bhavanipuram Lime stone Mine -3, Ravipahad
Palakeedu,Suryapet(Dist). Telangana-508218
MoEF No: J-11015/375/2015-IA.II (M) dated 05.01.2017

1. POST MONSOON

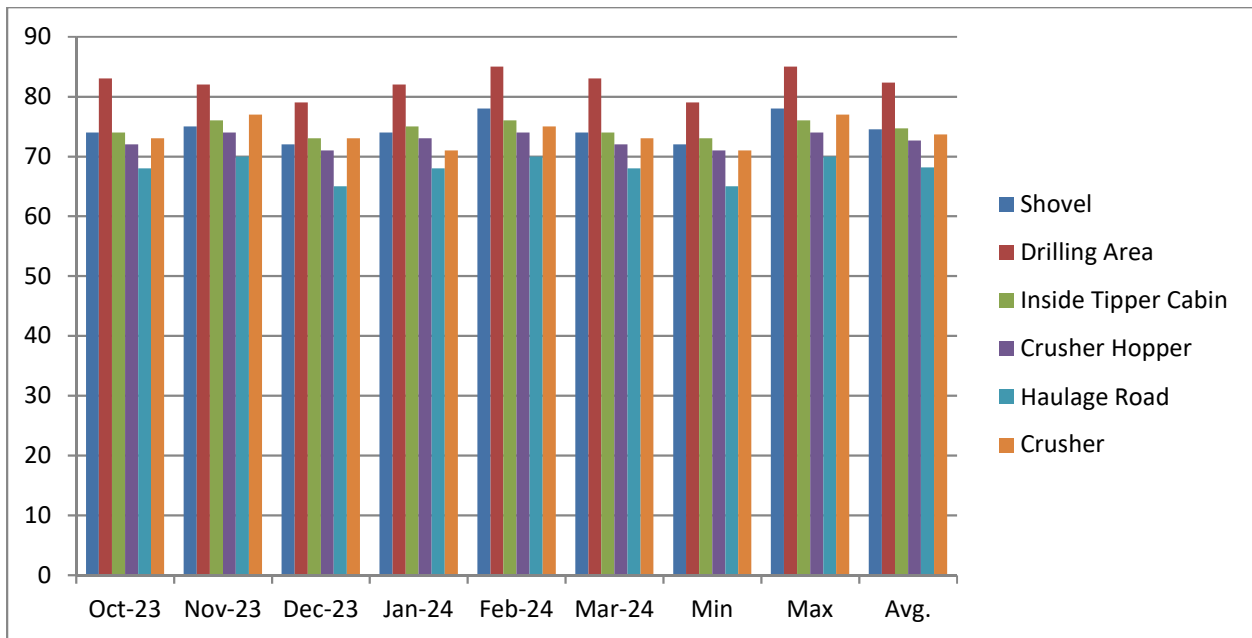
| S.No. | Core Zone | Location | Well RL (mtrs) | Water Level RL (mtrs) |
|-------|------------|----------|-------------------|--------------------------|
| 1 | GWM Well 1 | North | 72.75 | 49.12 |
| 2 | GWM Well 2 | East | 71.00 | 46.45 |
| 3 | GWM Well 3 | South | 64.15 | 63.55 |
| 4 | GWM Well 4 | West | 68.15 | 56.55 |

2. WINTER

| S.No. | Core Zone | Location | Well RL (mtrs) | Water Level RL (mtrs) |
|-------|------------|----------|-------------------|--------------------------|
| 1 | GWM Well 1 | North | 72.75 | 49.21 |
| 2 | GWM Well 2 | East | 71.00 | 46.53 |
| 3 | GWM Well 3 | South | 64.15 | 62.15 |
| 4 | GWM Well 4 | West | 68.15 | 53.95 |

ANNEXURE – III NOISE Levels (dB) Report

| Monthly Noise Level (dB) Report from OCT'2023 TO MARCH'2024 | | | | | | | | | | |
|-------------------------------------------------------------|---------------------|--------|--------|--------|--------|--------|--------|-----|-----|------|
| S No | | Oct-23 | Nov-23 | Dec-23 | Jan-24 | Feb-24 | Mar-24 | Min | Max | Avg. |
| 1 | Shovel | 74 | 75 | 72 | 74 | 78 | 74 | 72 | 78 | 75 |
| 2 | Drilling Area | 83 | 82 | 79 | 82 | 85 | 83 | 79 | 85 | 82 |
| 3 | Inside Tipper Cabin | 74 | 76 | 73 | 75 | 76 | 74 | 73 | 76 | 75 |
| 4 | Crusher Hopper | 72 | 74 | 71 | 73 | 74 | 72 | 71 | 74 | 73 |
| 5 | Haulage Road | 68 | 70 | 65 | 68 | 70 | 68 | 65 | 70 | 68 |
| 6 | Crusher | 73 | 77 | 73 | 71 | 75 | 73 | 71 | 77 | 74 |



Deccan Cements Limited, Bhavanipuram Lime stone Mine -3, Ravipahad
Palakeedu,Suryapet(Dist). Telangana-508218
MoEF No: J-11015/375/2015-IA.II (M) dated 05.01.2017

Third Party Monitoring Reports

| Ambient Noise-Day time | | | |
|----------------------------------|---------------------|------------|------------|
| S No | Location | OCT-DEC'23 | JAN-MAR'24 |
| 1 | North-East | 64 | 63 |
| 2 | South-West | 62 | 60 |
| 3 | East-West | 60 | 62 |
| 4 | North-South | 65 | 66 |
| | | | |
| Ambient Noise-Night Time | | | |
| S No | Location | OCT-DEC'23 | JAN-MAR'24 |
| 1 | North-East | 59 | 58 |
| 2 | South-West | 57 | 55 |
| 3 | East-West | 55 | 57 |
| 4 | North-South | 60 | 61 |
| | | | |
| Work Zone Noise -Day Time | | | |
| S No | Location | OCT-DEC'23 | JAN-MAR'24 |
| 1 | Near 470 Excavation | 79 | 82 |
| 2 | Near Drilling | 82 | 84 |
| 3 | Inside Dumper cabin | 75 | 76 |
| 4 | Near Crusher hopper | 78 | 77 |
| 5 | Near haul road | 74 | 72 |



ISO 9001, 14001 & 45001
CERTIFIED COMPANY

LAWN ENVIRO ASSOCIATES

[Engineers & Consultants in Pollution Control]

Recognised by Ministry of Environment Forest & Climate Change (MoEF & CC), GOI, New Delhi
& Laboratory Accredited by NABL

TEST REPORT

REF.NO: LAWN/DECCAN-M/2024

Date: 22-3-2024

AMBIENT NOISE LEVELS DATA

Name of the Industry & : **M/s. DECCAN CEMENTS LTD.,**
Address **BHAVANIPURAM LIMESTONE MINE-3,**
Ravipahad (V), Palakeedu (M),
Suryapet (Dist).

| Location | Noise Levels in dB (A) | |
|-------------------------------------|------------------------|------------|
| | Day Time | Night Time |
| 1. North – East side of boundary : | 63 | 58 |
| 2. South – West side of boundary : | 60 | 55 |
| 3. East – West side of boundary : | 62 | 57 |
| 4. North – South side of boundary : | 66 | 61 |

- Note :**
- Noise levels are monitored on 15-3-2024.
 - Instrument make - Lutron SL – 4001 / G-49271, Calibrated On 21-02-2024, Due On 20-02-2025.
 - Day time is reckoned in between 6.0 a.m and 10.0 p.m.; Limit <75 dB (A).
 - Night time is reckoned in between 10.0 p.m and 6.0 a.m.; Limit <70 dB (A).


AUTHORISED SIGNATORY



LAWN ENVIRO ASSOCIATES

[Engineers & Consultants in Pollution Control]

Recognised by Ministry of Environment Forest & Climate Change (MoEF & CC), GOI, New Delhi
& Laboratory Accredited by NABL

TEST REPORT

REF.NO: LAWN/DECCAN-M/2024

Date: 22-3-2024

WORK AREA NOISE LEVEL DATA

Name of the Industry & : **M/s. DECCAN CEMENTS LTD.,**
Address **BHAVANIPURAM LIMESTONE MINE-3,**
Ravipahad (V), Palakeedu (M),
Suryapet (Dist).

| Location | Levels in dB (A) |
|-------------------------------------------------|------------------|
| 1. Near 470 Excavation (At 5m distance) | 82 |
| 2. Near Drill Working (At 5m distance) | 84 |
| 3. Near Inside Dumper Cabin (At 5m distance) | 76 |
| 4. Near Crusher Hopper (At 5m distance) | 77 |
| 5. Near Haulage Road | 72 |

- Note:**
- Noise levels are monitored on 15-3-2024 at 8 hrs Exposure.
 - Instrument make - Lutron SL – 4001 / G-49271, Calibrated On 21-02-2024, Due On 20-02-2025.
 - The noise Pollution (Regulation and Control) Rules, 2000
Schedule, Rule 3(1) and 4(1), Section 7 – (IX) factories act – Limit <90 dB (A).
 - There are no Night operations i.e. beyond 10 p.m


AUTHORISED SIGNATORY

Deccan Cements Limited, Bhavanipuram Lime stone Mine -3, Ravipahad
Palakeedu,Suryapet(Dist). Telangana-508218
MoEF No: J-11015/375/2015-IA.II (M) dated 05.01.2017

ANNEXURE – IV

Mine Pit Water Consumption Details from OCTOBER'2023 to MARCH'2024

| Month Year | Dust Suppression(KL) | Green belt water (KL) | Domestic Water(KL) | Total Consu mption (KL) | Water Consumption(KL/Da y) |
|---------------|-------------------------|--------------------------|-----------------------|----------------------------------|----------------------------------|
| October'2023 | 2790 | 118 | 83 | 2991 | 96.48 |
| November'2023 | 2700 | 120 | 81 | 2901 | 96.70 |
| December'2023 | 2976 | 125 | 78 | 3179 | 102.55 |
| January'2024 | 2945 | 122 | 86 | 3153 | 101.71 |
| February'2024 | 2910 | 123 | 88 | 3121 | 107.62 |
| March'2024 | 2930 | 125 | 91 | 3146 | 101.48 |

Deccan Cements Limited, Bhavanipuram Lime stone Mine -3, Ravipahad
Palakeedu,Suryapet(Dist). Telangana-508218
MoEF No: J-11015/375/2015-IA.II (M) dated 05.01.2017



ISO 9001, 14001 & 45001
CERTIFIED COMPANY

LAWN ENVIRO ASSOCIATES

[Engineers & Consultants in Pollution Control]

Recognised by Ministry of Environment Forest & Climate Change (MoEF & CC), GOI, New Delhi
& Laboratory Accredited by NABL

TEST REPORT

REF.NO: LAWN/DECCAN-M/2024

Date: 22-3-2024

WATER TABLE DETAILS

Name of the Industry & : **M/s. DECCAN CEMENTS LTD.,**
Address **BHAVANIPURAM LIMESTONE MINE-3,**
Ravipahad (V), Palakeedu (M),
Suryapet (Dist).

Water table level with reference to existing ground level on 15-3-2024 in ML – 3 Water level is
17.40 m


AUTHORISED SIGNATORY

Deccan Cements Limited, Bhavanipuram Lime stone Mine -3, Ravipahad
Palakeedu,Suryapet(Dist). Telangana-508218
MoEF No: J-11015/375/2015-IA.II (M) dated 05.01.2017



Haul Road wetting with water tanker

Wet Drilling at Mines

Deccan Cements Limited, Bhavanipuram Lime stone Mine -3, Ravipahad
Palakeedu,Suryapet(Dist). Telangana-508218
MoEF No: J-11015/375/2015-IA.II (M) dated 05.01.2017



Automatic Water sprinklers at mines haul road for Dust Suppression



CAAQMS & OCEMS DIGITAL DISPLAY AT FACTORY MAIN GATE
(Continuous Ambient Air Quality Data & Stack Emission Monitoring)

Deccan Cements Limited, Bhavanipuram Lime stone Mine -3, Ravipahad
Palakeedu, Suryapet (Dist). Telangana-508218
MoEF No: J-11015/375/2015-IA.II (M) dated 05.01.2017



The image shows an LED display board with a blue frame and a black background. The text is displayed in red and green. The title is 'DECCAN CEMENTS LIMITED' in red. Below it is 'Online Pollution Emission Levels' in red. The table has three columns: 'Stack Location', 'SOX', 'NOX', and 'SPM'. The units for SOX, NOX, and SPM are '(mg/nm3)'. The data is as follows:

| Stack Location | SOX | NOX | SPM |
|----------------|-------|-------|-------|
| KILN-2 RABH | 002.8 | 374.6 | 019.5 |
| COOLER-2 | --- | --- | 025.0 |
| COAL MILL-2 | --- | --- | 022.9 |
| CEMENT MILL-3 | --- | --- | 020.1 |

Plantation



Check Dams

Deccan Cements Limited, Bhavanipuram Lime stone Mine -3, Ravipahad
Palakeedu, Suryapet (Dist). Telangana-508218
MoEF No: J-11015/375/2015-IA.II (M) dated 05.01.2017



Deccan Cements Limited, Bhavanipuram Lime stone Mine -3, Ravipahad
Palakeedu, Suryapet(Dist). Telangana-508218
MoEF No: J-11015/375/2015-IA.II (M) dated 05.01.2017

Medical Camp



Deccan Cements Limited, Bhavanipuram Lime stone Mine -3, Ravipahad
Palakeedu,Suryapet(Dist). Telangana-508218
MoEF No: J-11015/375/2015-IA.II (M) dated 05.01.2017



View Point

Deccan Cements Limited, Bhavanipuram Lime stone Mine -3, Ravipahad
Palakeedu,Suryapet(Dist). Telangana-508218
MoEF No: J-11015/375/2015-IA.II (M) dated 05.01.2017



Deccan Cements Limited, Bhavanipuram Lime stone Mine -3, Ravipahad
Palakeedu,Suryapet(Dist). Telangana-508218
MoEF No: J-11015/375/2015-IA.II (M) dated 05.01.2017



MANAGEMENT SYSTEM CERTIFICATE

Certificate no.:
269107-2018-AQ-IND-RvA

Initial certification date:
24 August 2018

Valid:
24 August 2021 – 23 August 2024

This is to certify that the management system of
Deccan Cements Limited
Bhavanipuram, Nereducherla, Miryalaguda – 508 218, Telangana, India
and the sites as mentioned in the appendix accompanying this certificate

has been found to conform to the Quality Management System standard:
ISO 9001:2015

This certificate is valid for the following scope:
Manufacture of cement

Place and date:
Chennai, 03 August 2021

For the issuing office:
DNV - Business Assurance
ROMA, No. 10, GST Road, Alandur,
Chennai - 600 016, India



Sivadasan Madiyath
Management Representative

Deccan Cements Limited, Bhavanipuram Lime stone Mine -3, Ravipahad
Palakeedu,Suryapet(Dist). Telangana-508218
MoEF No: J-11015/375/2015-IA.II (M) dated 05.01.2017



MANAGEMENT SYSTEM CERTIFICATE

Certificate no.:
269103-2018-AE-IND-RvA

Initial certification date:
24 August 2018

Valid:
24 August 2021 – 23 August 2024

This is to certify that the management system of
Deccan Cements Limited
Bhavanipuram, Nereducherla, Miryalaguda – 508 218, Telangana, India
and the sites as mentioned in the appendix accompanying this certificate

has been found to conform to the Environmental Management System standard:
ISO 14001:2015

This certificate is valid for the following scope:
Manufacture of cement

Place and date:
Chennai, 08 August 2021

For the issuing office:
DNV - Business Assurance
RCMA, No. 10, GST Road, Alandur,
Chennai - 600 016, India



Sivadasan Mediyath
Management Representative

Lack of fulfillment of conditions as set out in the Certification Agreement may render this Certificate invalid.

ACCREDITED UNIT: DNV Business Assurance B.V., Zwolseweg 1, 2994 LB, Barendrecht, Netherlands - TEL: +31(0)102922689. www.dnv.com/assurance

Deccan Cements Limited, Bhavanipuram Lime stone Mine -3, Ravipahad
Palakeedu,Suryapet(Dist). Telangana-508218
MoEF No: J-11015/375/2015-IA.II (M) dated 05.01.2017



MANAGEMENT SYSTEM CERTIFICATE

Certificate no.:
10000470417-MSC-RvA-IND

Initial certification date:
24 August 2018

Valid:
24 August 2021 – 23 August 2024

This is to certify that the management system of
Deccan Cements Limited
Bhavanipuram, Nereducherla, Miryalaguda - 508218, Telangana, India
and the sites as mentioned in the appendix accompanying this certificate

has been found to conform to the Occupational Health and Safety Management System standard:
ISO 45001:2018

This certificate is valid for the following scope:
Manufacture of cement

Place and date:
Barendrecht, 04 August 2021

For the issuing office:
DNV - Business Assurance
Zwolseweg 1, 2994 LB Barendrecht, Netherlands



Eerie Koek
Management Representative

Lack of fulfilment of conditions as set out in the Certification Agreement may render this Certificate invalid.
ACCREDITED UNIT: DNV Business Assurance B.V., Zwolseweg 1, 2994 LB, Barendrecht, Netherlands - TEL: +31(0)102922689. www.dnv.com/assurance